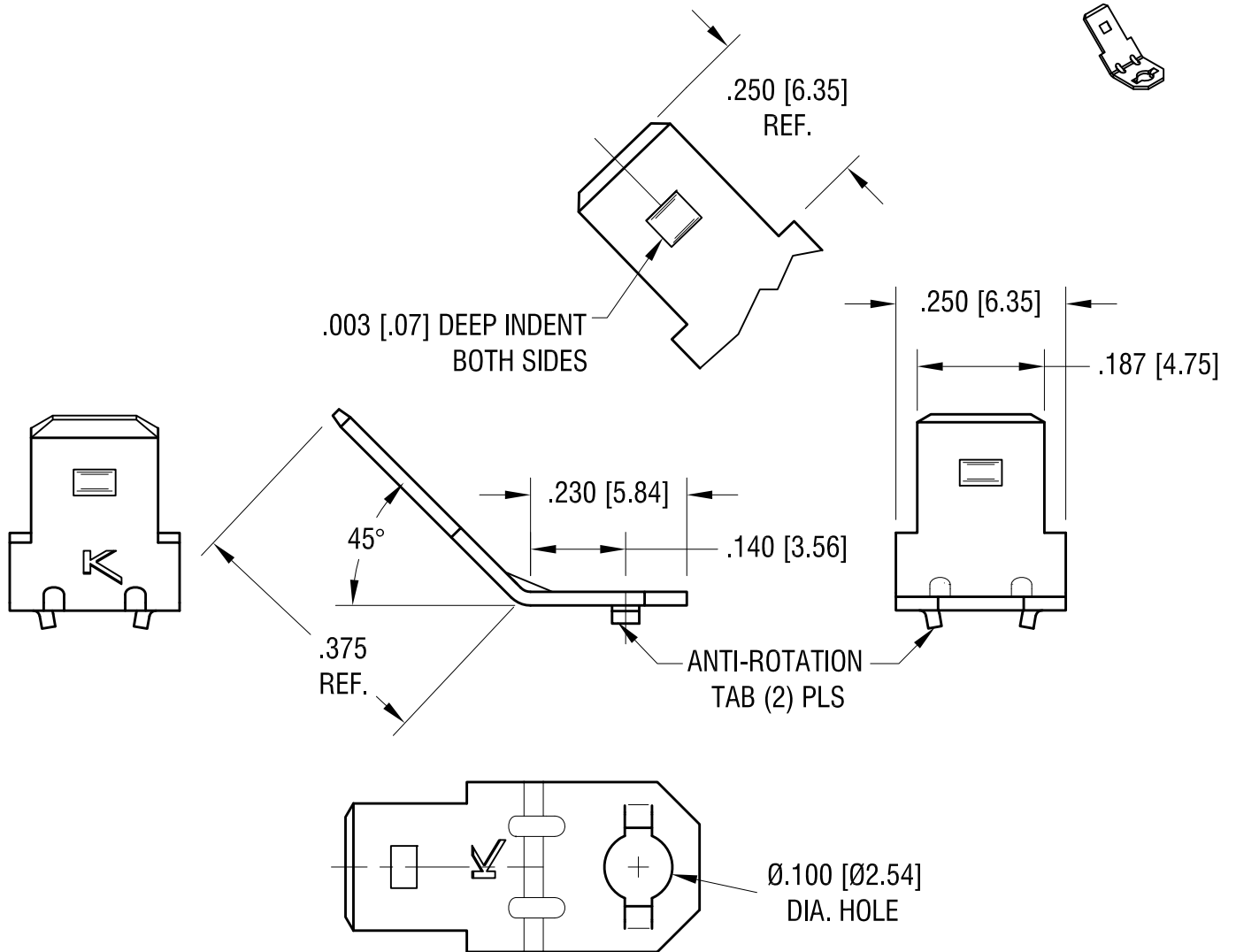


THIS DOCUMENT IS THE PROPERTY OF  
KEYSTONE ELECTRONICS CORP. AND  
SHALL NOT BE REPRODUCED, DISTRIBUTED  
OR USED AS A BASIS FOR MANUFACTURE  
WITHOUT PRIOR WRITTEN PERMISSION  
FROM KEYSTONE ELECTRONICS CORP.

**ACTUAL SIZE**



1.27.16	CHANGE AS PER ECN 16-017	C
8.21.12	CHANGE AS PER ECN 12-110	B
3.29.12	CHANGE AS PER ECN 12-043	A
DATE	DESCRIPTION	REV.

<b>KEYSTONE ELECTRONICS CORP.</b>			
www.keyelco.com • ASTORIA, N.Y. 11105-2017 • Tel (718) 956-8900			
PART NAME		<b>.187 QUICK-FIT TERMINAL</b>	
MATERIAL		<b>.020 [0.50] TH'K BRASS</b>	
FINISH		DRN BY	DATE
<b>BRIGHT BRASS</b>		BOONE	8.9.93
		APP'D	SCALE
TOLERANCES INCH [MM]		CODE	DWG NO.
ANGULAR $\pm 1^\circ$		<b>C</b>	
UNLESS OTHERWISE SPECIFIED			