



## SERIES 1858 - MINIATURE DOUBLE-POLE ROCKER SWITCHES

TO 10 (4) A 250 V AC 1E4






### PRODUCT FEATURES

- Non-illuminated rocker switch
- Powerful with inrush currents (capacitive) up to 100 A
- Immediately self-extinguishing due to UL 94 V-0 material
- Conformant acc. to EN 60065 par. 14.6

### ON REQUEST

- Other colors
- Other printing variants
- Single-pole assembled
- Cable assembly

Mechanical life endurance	10E4
Operating force	≤ 5 N
Inrush current (capacitive)	100 A
Contact resistance (new condition)	< 100 mΩ (1 A 12 V DC)
Insulation resistance (new condition)	> 100 MΩ (500 V DC)
Proof tracking	250 PTI
Protection type	IP 40
Ambient temperature	terminal side -20 °C ... +100 °C actuating side -20 °C ... +55 °C
Flammability	UL 94 V-0 UL 94 V-2 (in the versions in white)
Glow wire test temperature	850 °C
Material actuator housing terminals	PA PA silver plated
Plug force of the terminals	≤ 80 N
Approval marks	 /  / 
Suitable for appliances of protection class II	

ROCKER SWITCHES

PUSHBUTTON SWITCHES

TOGGLE SWITCHES

SLIDE SWITCHES

ROTARY SWITCHES

FOOT SWITCHES

TACT AND KEY SWITCHES

SNAP-ACTION SWITCHES

MICRO-SIGNAL SWITCHES

SENSORS

ECO



PUSH/DRIVE



# SERIES 1858 - MINIATURE DOUBLE-POLE ROCKER SWITCHES

TO 10 (4) A 250 V AC 1E4

- ROCKER SWITCHES
- PUSHBUTTON SWITCHES
- TOGGLE SWITCHES
- SLIDE SWITCHES
- ROTARY SWITCHES
- FOOT SWITCHES
- TACT AND KEY SWITCHES
- SNAP-ACTION SWITCHES
- MICRO-SWITCHES
- SENSORS
- ECO
- PUSH/DOME

	Actuator color / printing	Housing color	10 (4) A 250 V AC 1E4	6 (4) A 250 V AC 5E4	12 A 250 V AC 1/2 HP	12 A 125 V AC 1/3 HP	Terminal type	Terminal description	Contact distance (mm)	Contact material	Miscellaneous	Stock version
<div style="display: flex; justify-content: space-around; align-items: center;">  <div style="text-align: center;">double-pole</div>  </div>												
ON / OFF switch (DPST)												
1858.0103			<input type="radio"/>	<input type="radio"/>	<input type="radio"/>	<input type="radio"/>			≥ 3	Ag	<input type="radio"/>	
1858.0104			<input type="radio"/>	<input type="radio"/>	<input type="radio"/>	<input type="radio"/>			≥ 3	Ag	<input type="radio"/>	
1858.1102			<input type="radio"/>	<input type="radio"/>	<input type="radio"/>	<input type="radio"/>		4.8	≥ 3	Ag	<input type="radio"/>	<input type="radio"/>
1858.1103			<input type="radio"/>	<input type="radio"/>	<input type="radio"/>	<input type="radio"/>		4.8	≥ 3	Ag	<input type="radio"/>	<input type="radio"/>
1858.1104			<input type="radio"/>	<input type="radio"/>	<input type="radio"/>	<input type="radio"/>		4.8	≥ 3	Ag	<input type="radio"/>	
1858.1105			<input type="radio"/>	<input type="radio"/>	<input type="radio"/>	<input type="radio"/>		4.8	≥ 3	Ag	terminal spacing 10	
1858.2202			<input type="radio"/>	<input type="radio"/>	<input type="radio"/>	<input type="radio"/>			≥ 3	Ag	<input type="radio"/>	<input type="radio"/>
1858.2204			<input type="radio"/>	<input type="radio"/>	<input type="radio"/>	<input type="radio"/>			≥ 3	Ag	<input type="radio"/>	
1858.4202			<input type="radio"/>	<input type="radio"/>	<input type="radio"/>	<input type="radio"/>			≥ 3	Ag	<input type="radio"/>	<input type="radio"/>
1858.4205			<input type="radio"/>	<input type="radio"/>	<input type="radio"/>	<input type="radio"/>			≥ 3	Ag	<input type="radio"/>	<input type="radio"/>
1858.9202			<input type="radio"/>	<input type="radio"/>	<input type="radio"/>	<input type="radio"/>			≥ 3	Ag	single-pole occupied	

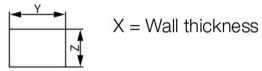


# SERIES 1858 - MINIATURE DOUBLE-POLE ROCKER SWITCHES

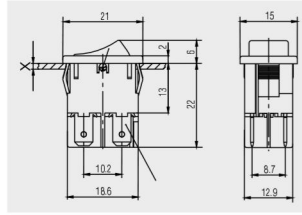
TO 10 (4) A 250 V AC 1E4



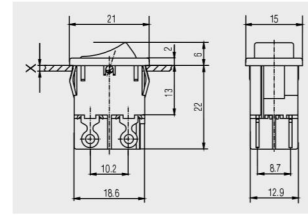
Basic type 1858  
double-pole



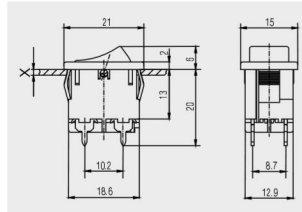
x	y	z
0.75 ... 1.25	19.2 <sup>-0.1</sup>	12.9 <sup>+0.1</sup>
1.25 ... 2	19.4 <sup>-0.1</sup>	12.9 <sup>+0.1</sup>
2 ... 3	19.8 <sup>-0.1</sup>	12.9 <sup>+0.1</sup>



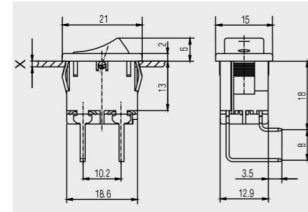
Quick-connect terminal 4.8 x 0.8



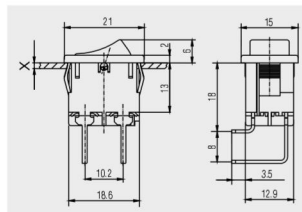
Solder terminal



PCB terminal



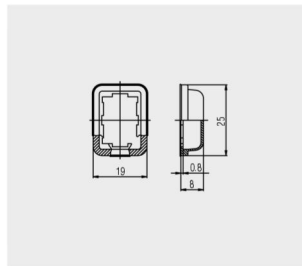
PCB terminal angled to  
terminal side 1



PCB terminal angled to  
terminal side 2



Protection cap  
203.089.011



Transparent PVC-protection cap.  
Serves as dust and water protection  
of the actuation side.