



## PRODUCT FEATURES

- Low height even with integrated LED
- SMD connection technique
- Pleasant actuating characteristic thanks to clearly tangible pressure point
- Extremely large actuator surface
- Six standard colors
- Two operating force variants
- Reflow lead-free solderable

## ON REQUEST

- Other LED colors
- Different brightness groups

Mechanical life endurance	50E4 4N version, 20E4 6N version
Contact resistance (new condition)	< 100 mOhm
Ambient temperature	-40 °C ... +95 °C (1 h to +120 °C)
Material terminals	gold plated
Bounce time	< 5 ms
Packing unit	1 800 pieces in blister belt on a roller
Miscellaneous	rating max. 1W voltage range 20 mV - 28 V current range 10 µA - 50 mA electrical life endurance: 4 N: 14V DC 10 mA 50E4 6 N: 14V DC 10 mA 20E4

ROCKER SWITCHES

PUSHBUTTON SWITCHES

TOGGLE SWITCHES

SLIDE SWITCHES

ROTARY SWITCHES

FOOT SWITCHES

TACT AND KEY SWITCHES

SNAP-ACTION SWITCHES

MICRO-SIGNAL SWITCHES

SENSORS

ECO

PUSH/DRIVE

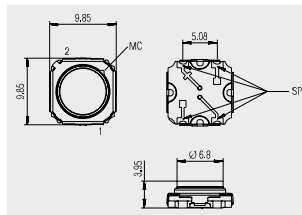


- ROCKER SWITCHES
- PUSHBUTTON SWITCHES
- TOGGLE SWITCHES
- SLIDE SWITCHES
- ROTARY SWITCHES
- FOOT SWITCHES
- TACT AND KEY SWITCHES**
- SNAP-ACTION SWITCHES
- MICRO-SWITCHES
- SENSORS
- ECO
- PUSH/ODDME

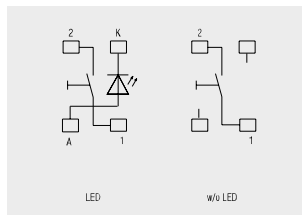
single-pole	max 1 Watt	Contact material	Operating force (N)	Operating position (OP) (mm)	Free position (FP) max. (mm)	Permissible total travel position (TP) (mm)	Color lamp	Miscellaneous	Stock version
<b>Normally open contact (SPNO)</b>									
3006.2100	○	Au	4 +1 -0.5	3.2 ±0.2	4.15	2.9		without LED	
3006.2101	○	Au	4 +1 -0.5	3.2 ±0.2	4.15	2.9	Yellow		
3006.2102	○	Au	4 +1 -0.5	3.2 ±0.2	4.15	2.9	Red		
3006.2104	○	Au	4 +1 -0.5	3.2 ±0.2	4.15	2.9	Blue		
3006.2105	○	Au	4 +1 -0.5	3.2 ±0.2	4.15	2.9	Orange		
3006.2106	○	Au	4 +1 -0.5	3.2 ±0.2	4.15	2.9		LED white	
3006.2107	○	Au	4 +1 -0.5	3.2 ±0.2	4.15	2.9	Green		
3006.2151	○	Au	4 +1 -0.5	3.2 ±0.2	4.15	2.9	Yellow	low current consumption reduced brightness	
3006.2300	○	Au	6 +1.5 -0.75	3.2 ±0.2	4.15	2.9		without LED	
3006.2301	○	Au	6 +1.5 -0.75	3.2 ±0.2	4.15	2.9	Yellow		
3006.2306	○	Au	6 +1.5 -0.75	3.2 ±0.2	4.15	2.9		LED white	



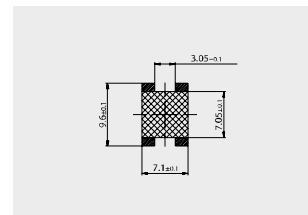
Basic type 3006



SMD connection technique



Circuit diagram with / without LED



Solder pad design