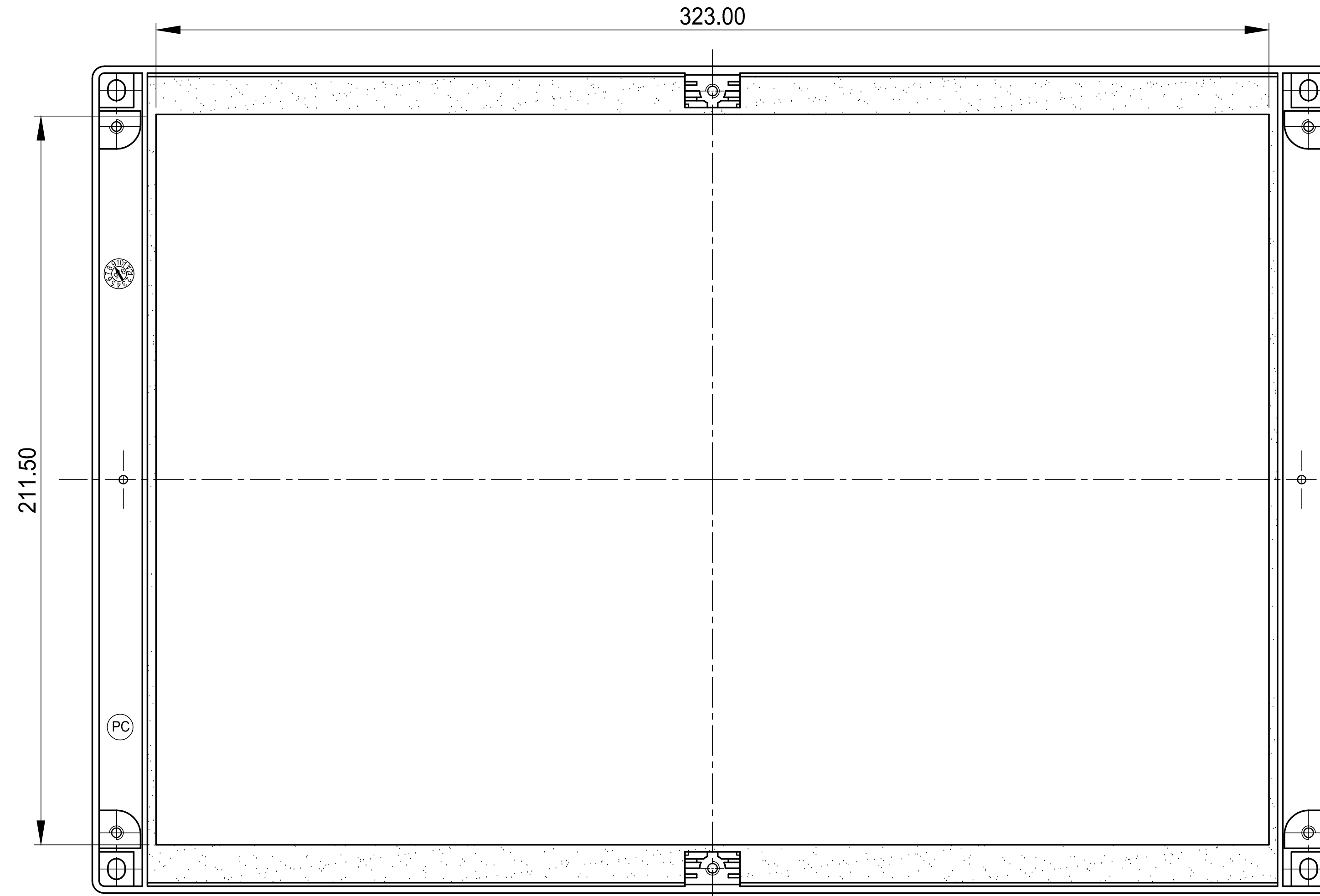
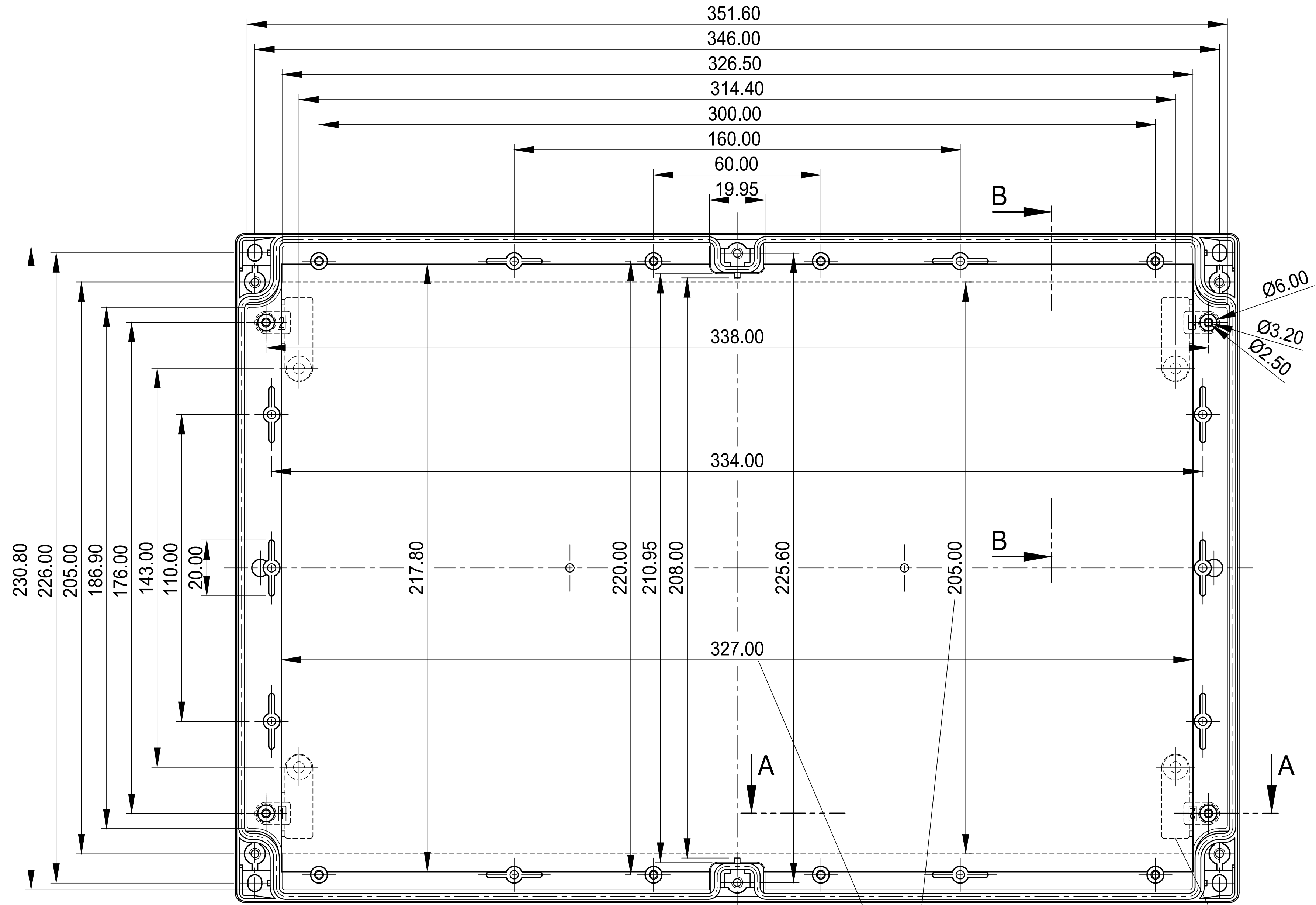


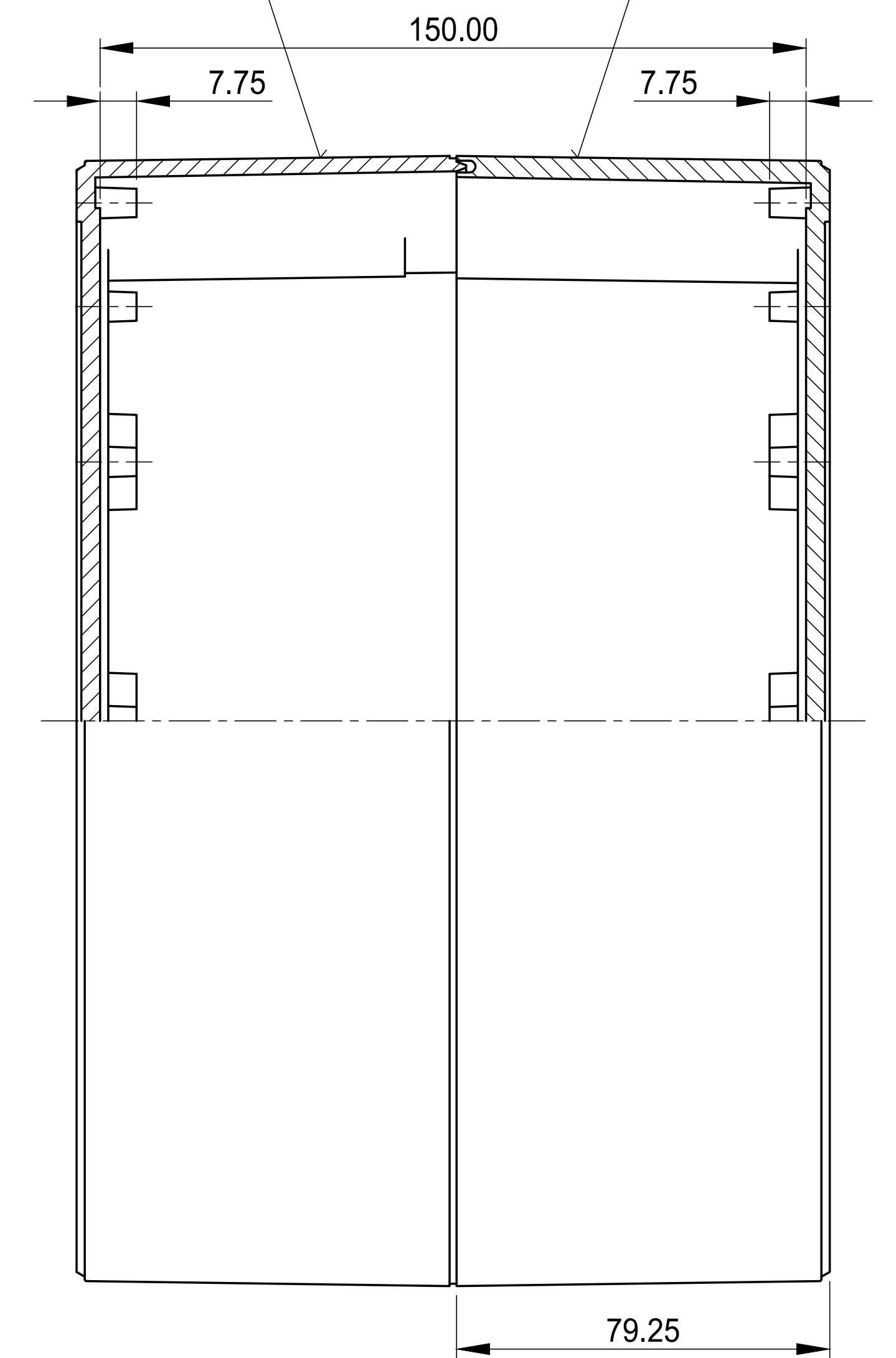
Unterteil mit Feder
(auch als Oberteil verwendbar)

base part with tongue
(can be used as top also)



Schale mit Feder
shell with tongue
C 42 43 601

Schale mit Nut
shell with groove
C 52 43 601



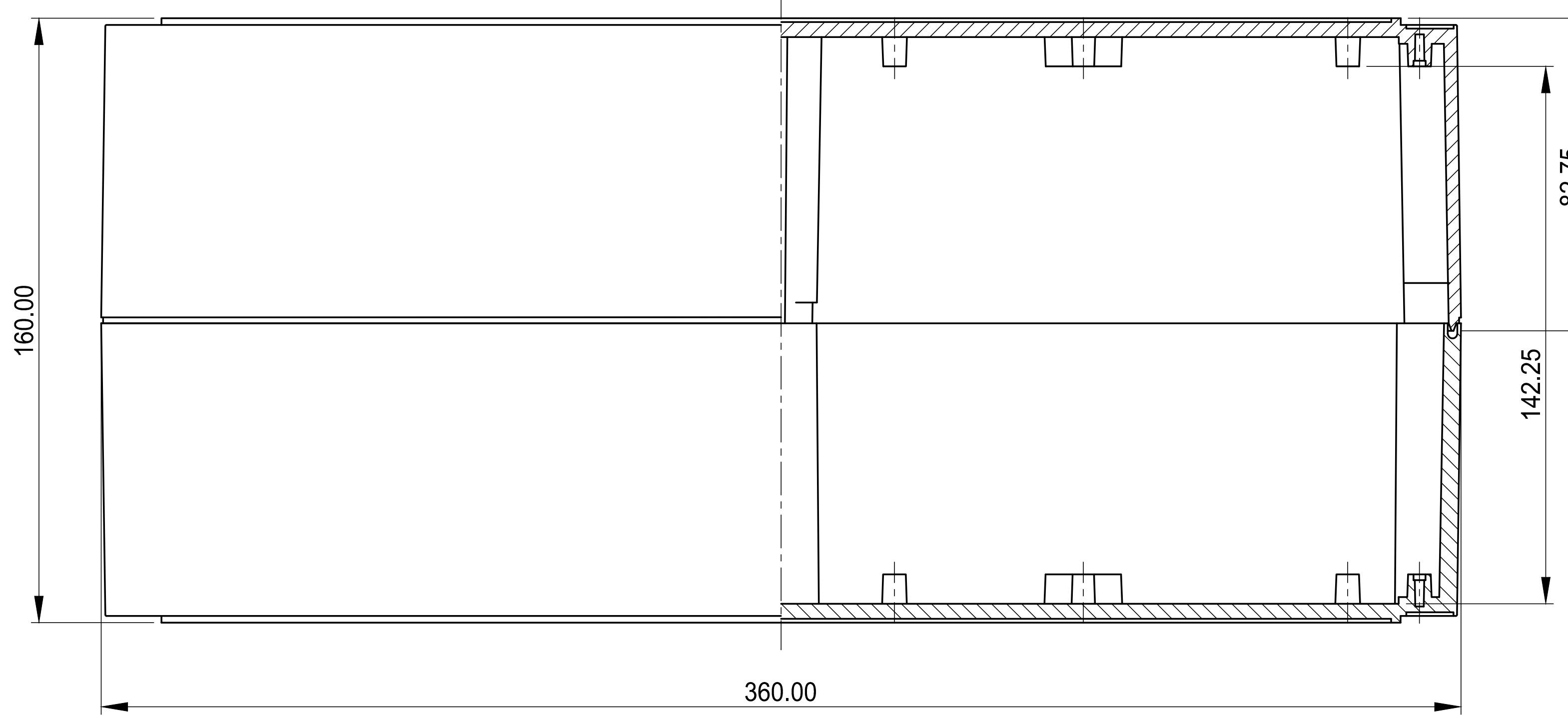
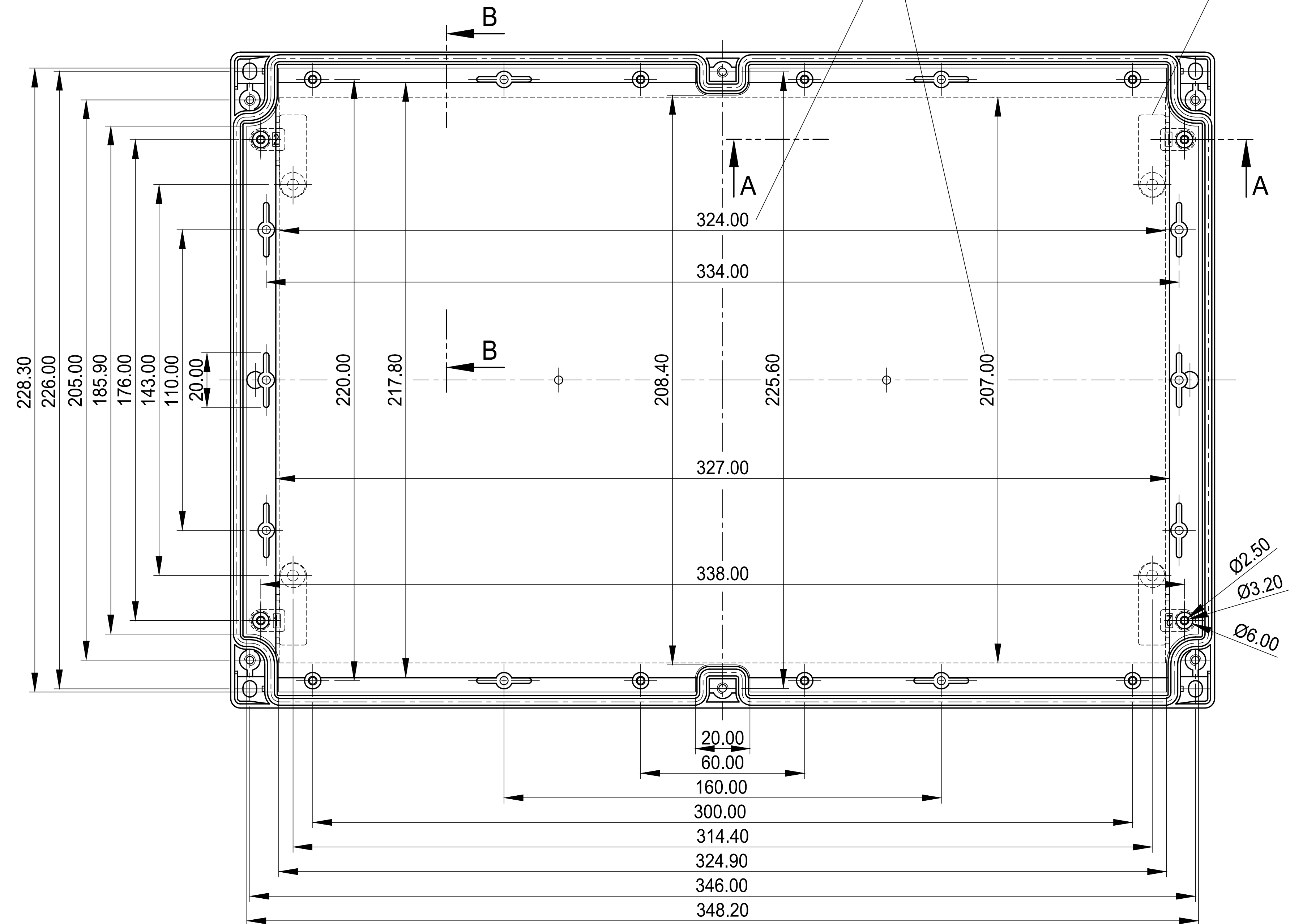
Schnitt B-B
section

Oberteil mit Nut
(auch als Unterteil verwendbar)

top part with groove
(can be used as base also)

max. Platinenmaße
max. size of PCB

Kartenhalter C2299068
PCB support C2299068



Schnitt A-A
section

Z (PZ2)

| | | | | |
|--|---|--|---------------------------------------|----------------------------|
| Informationskopie will not be updated | Copy for information will not be updated | Issue date: 07.04.1998 Drawing: 01N 1000 T130 Revision: 08 | Scale: ANSI/BSI Drawing: ISO | Sheet: 1 of 2 Part 2 |
| Technische Änderungen vorbehalten. Irrtümer und Druckfehler begleiten keinen Anspruch auf Schadensersatz. Wichtige Einbau- anweisungen sind stets mit dem aktuellen Produkt abzuwe- sen. Subject to technical modification without prior notice. Typographical and other errors do not justify any claim for damages. All dimensions should be verified using an actual moulded part. Tous renseignements techniques, tous erreurs ou fautes d'impression ne justifient aucune demande d'indemnisation. Nous précisons les clients de vérifier les dimensions des composants avec les modèles avant le montage. | | The source code and property information of OGW Constructions GmbH and its related parent is the exclusive property of the manufacturer and shall not be reproduced, copied, stored in a retrieval system or used in any product. The source code and property information of OGW Constructions GmbH and its related parent is the exclusive property of the manufacturer and shall not be reproduced, copied, stored in a retrieval system or used in any product. | | Material: 1:1 |
| GEHÄUSE SYSTEME | | ROBUST-BOX 240 Case complete, 240x360x160 C2524361 | | Drawn: 12/2002 |