

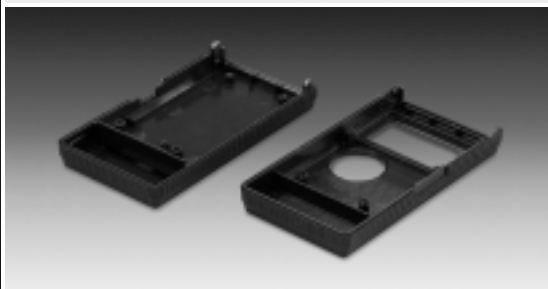


VERSION I

HAND-HELD-BOX G.
Without lateral recess.
With removable front panel.

VERSION II

HAND-HELD-BOX K.
Special type for multi-meters.
With lateral recess for slide switch and borehole for knob on the upper side.
With removable front panel.



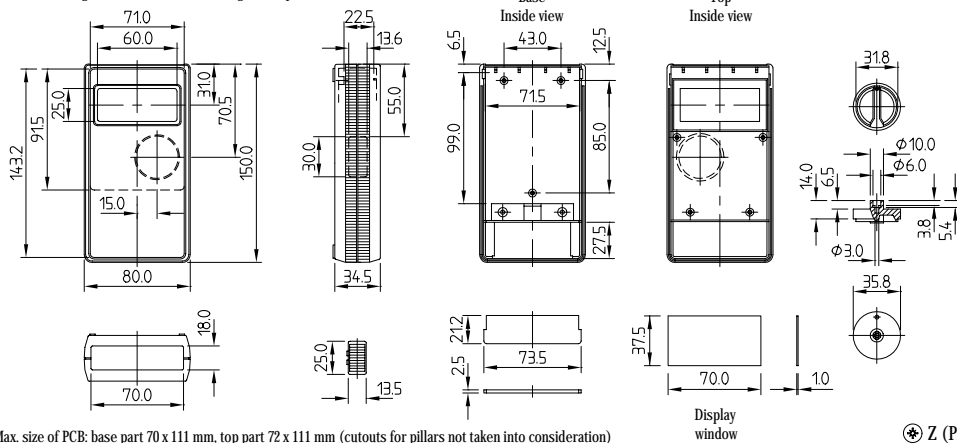
DESIGN

Clearly styled hand-held case with ridged side areas affording a firm grip. Suitable for two-layer PCB mounting. Version I with recessed area 142.4 x 71 mm for membrane keyboards or imprinting. Cut-out section for digital and analogical modules with active area up to 60 x 25 mm. Battery compartment for 9 V flat battery (PP3), accessible from the outside.

ASSEMBLY

Case parts are assembled by 2 screws. Removable and plug-in type rear panel.

Detailed drawing available on demand in dwg, dxf or pdf format.



⊗ Z (PZ1)

Part-No.	CASE (Part-No. with \neq see EMC page 50)			Version
	Outside dimensions in mm			
	L	W	H	
A 90 63 011 \neq	150	80	34.5	black brown I
A 90 63 021 \neq	150	80	34.5	black brown II
ACCESSORIES				
	Article		Colour	Version / Application
A 91 63 001	Switch knob		black brown	
A 91 63 003	Slide switch cap		black brown	slide dimensions 3 x 3 mm
A 91 60 003	Plug-in contact		blue	for 1 x 9 V flat battery (PP3)
A 91 63 004	Display window		transparent	plexiglass
A 91 63 005	Adhesive foil		transparent	for fastening the display window

SERVICE-CENTER

See pages 221-227.

SERVICE-CENTER

See pages 221-227.